

2021 RTSP

MADRID TRANSPORTATION SAFETY PLAN



505.338.0988



8220 San Pedro Drive NE, Suite 150
Albuquerque, NM 87113





Source: Santa Fe NM True (<https://santafenmtrue.com/media/files/DayTripImage2.jpg>)

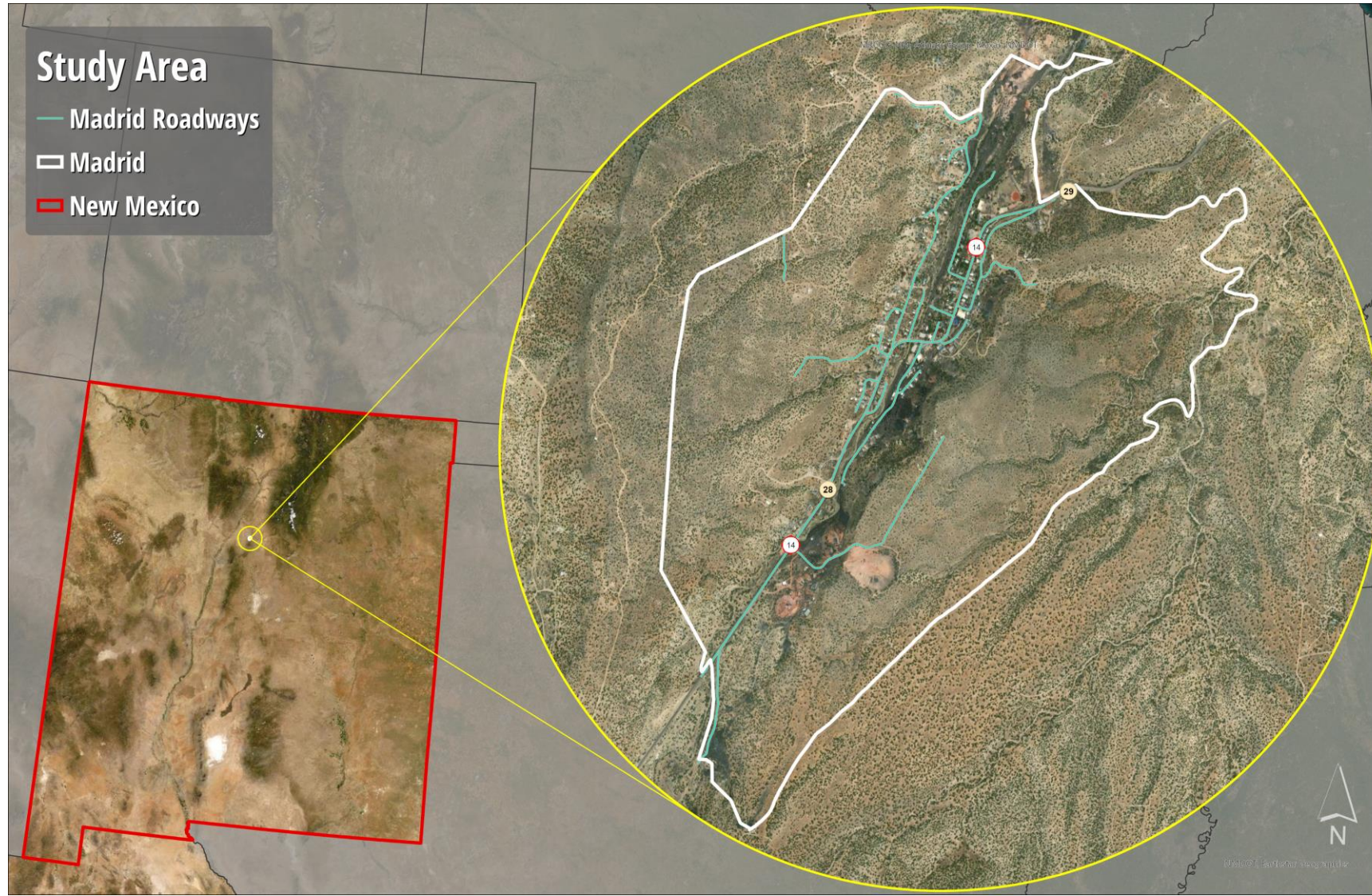
INTRODUCTION



SCHEDULE

Data Collection and Preliminary Analysis	February 2021
Stakeholder Meeting #1	March 25 th , 2021
Public Meeting #1	March 31 st , 2021
Analysis and Preliminary Identification of Countermeasures	April 2021
Stakeholder Meeting #2	May 5 th , 2021
Findings & Recommendations	May 2021
Public Meeting #2	June 16, 2021
Community-wide Multimodal Safety Plan	July 2021

STUDY AREA



PROJECT WEBPAGE

- <https://leeengineering.com/madrid/>
- Recording for Public Meeting #2 will be available here

Home // Madrid Transportation Safety Plan Information

New Mexico DEPARTMENT OF TRANSPORTATION
LEE ENGINEERING
SANTA FE COUNTY

The New Mexico Department of Transportation, in partnership with Santa Fe County and Lee Engineering is currently initiating a community-wide transportation safety plan for the village of Madrid. The six-month planning process will culminate in a plan to enhance safety and mobility for all roadway users; pedestrians, bicyclists, and motorists.

Please use this page to access presentation materials, recordings, and meeting summaries from previous meetings. Also, the details for June's public meeting and the link to register and attend will be posted here in the weeks leading up to the meeting. The intent of this page is to keep the community of Madrid informed during the project's duration. Upon completion of the project, the content on this page will be removed. The final report will be available through NMDOT.

Thank you for your interest and support as we work to improve roadway safety in the village of Madrid!

Public Meetings

Public Meeting #1 | [View Here](#)

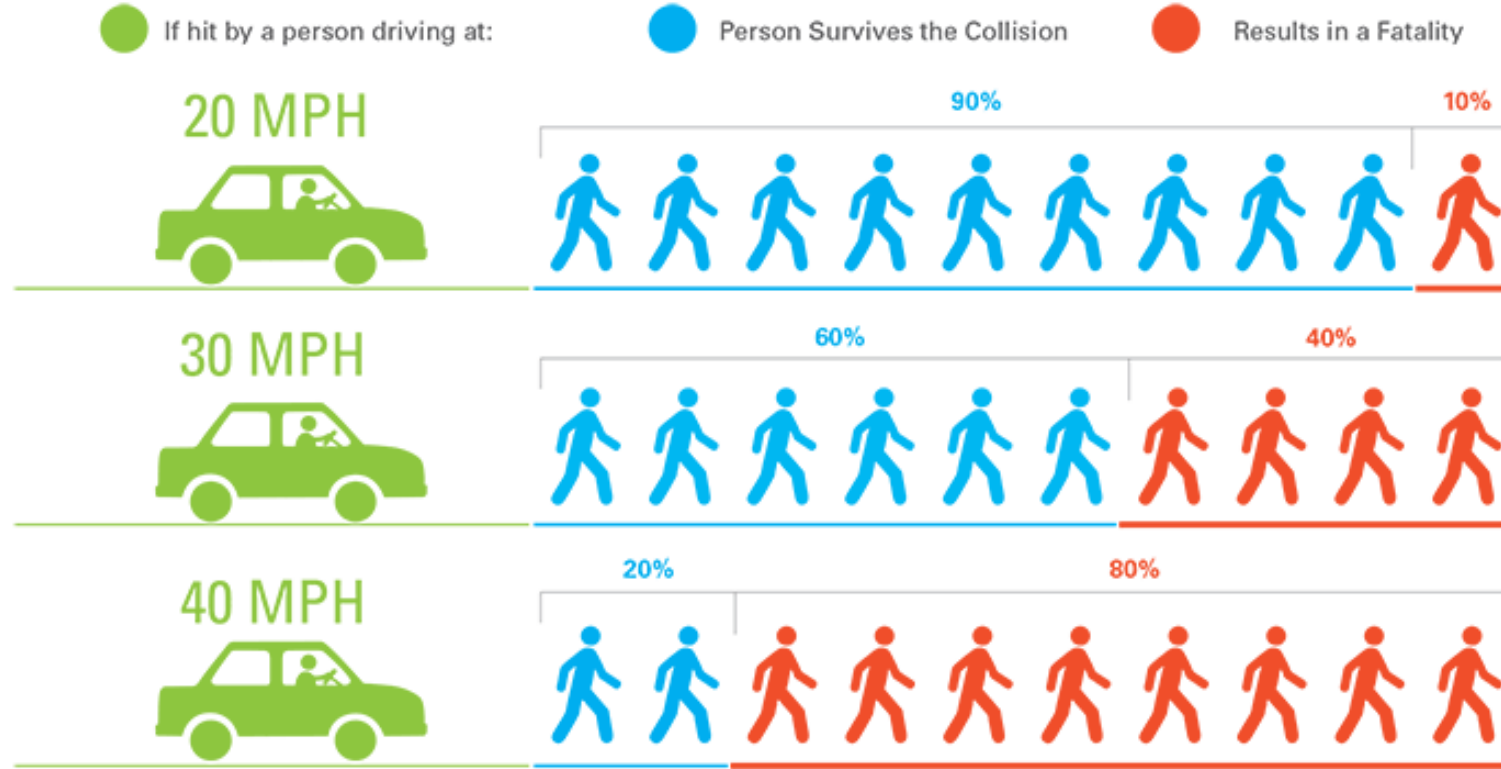
Public Downloads

Public Meeting #1 PPT - [Download Here](#)

Project Schedule

ACTIVITY	DATE
Data Collection and Preliminary Analysis	February 2021
Public Meeting #1	March 31st, 2021
Analysis and Preliminary Identification of Countermeasures	April 2021
Findings & Recommendations	May 2021

VEHICLE SPEED AND PEDESTRIAN SAFETY



<https://www.ite.org/technical-resources/topics/speed-management-for-safety/speed-as-a-safety-problem/>

TIERED APPROACH

Tier 1

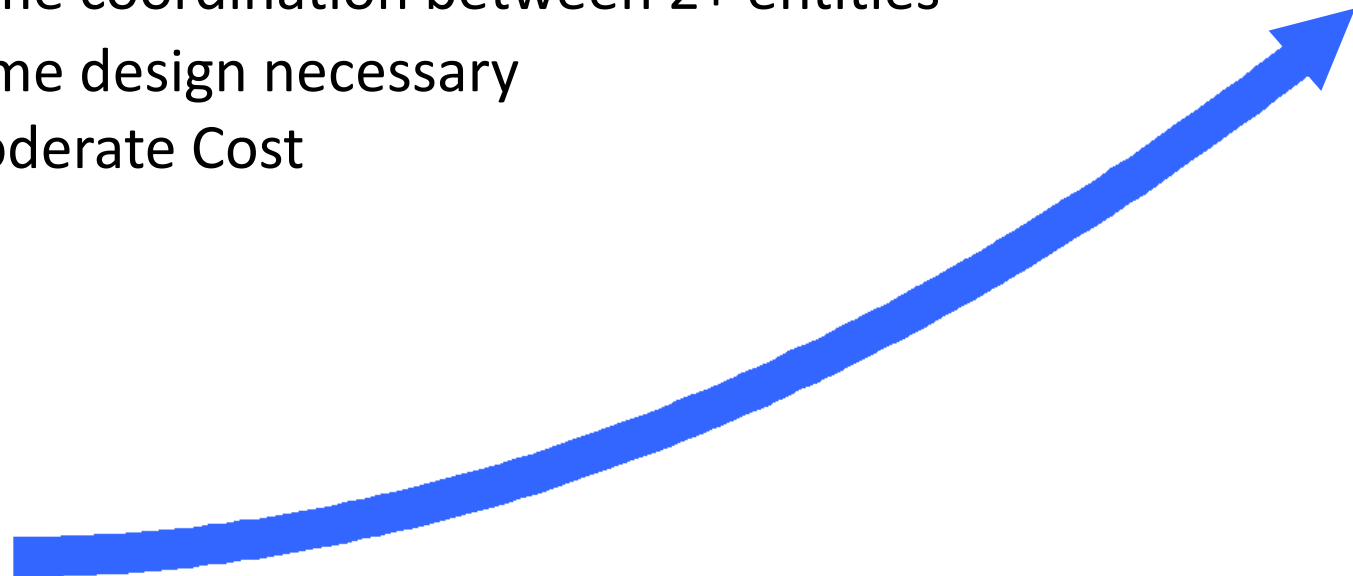
- Near-term (≈ 6 mos.)
- No coordination
- Maintenance
- Low Expense

Tier 2

- Mid-term (≈ 1 yr.)
- Some coordination between 2+ entities
- Some design necessary
- Moderate Cost

Tier 3

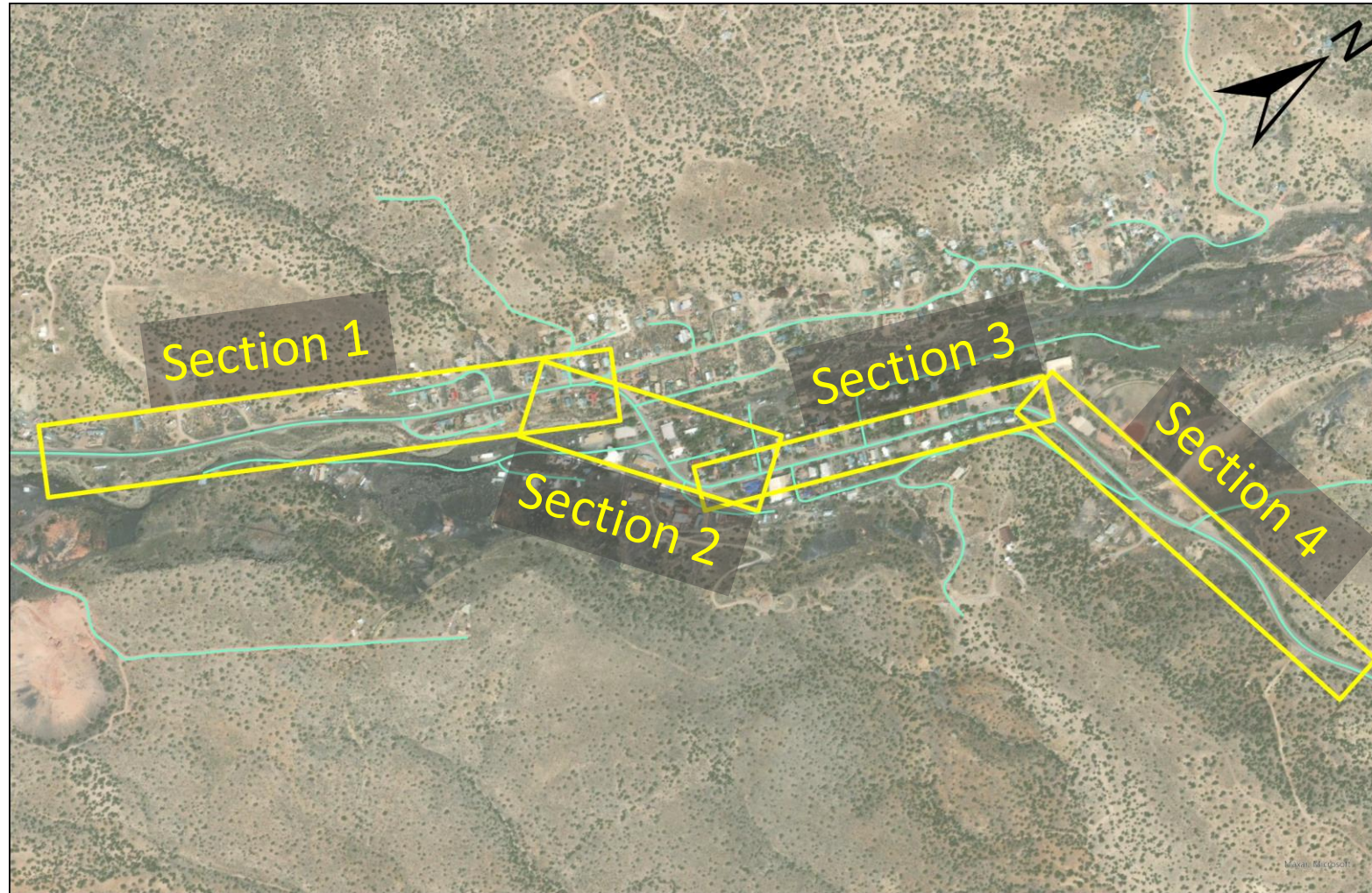
- Long Term ($\approx 2+$ yr.)
- May require environmental and/or cultural resource clearances
- Results in Request for Bid
- Necessary to utilize multiple funding avenues



COUNTERMEASURE TOOLBOX



PRESENTATION ORGANIZATION



CORRIDOR-WIDE COUNTER MEASURES



SECTION 1

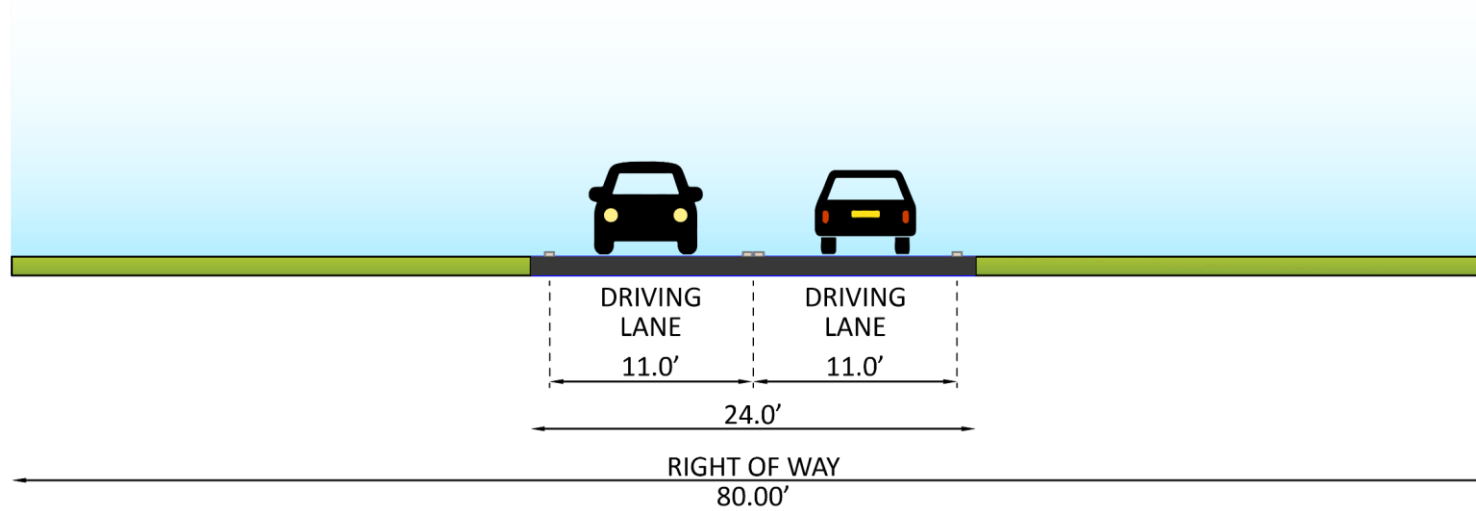
Observed Challenges

- Speed Compliance

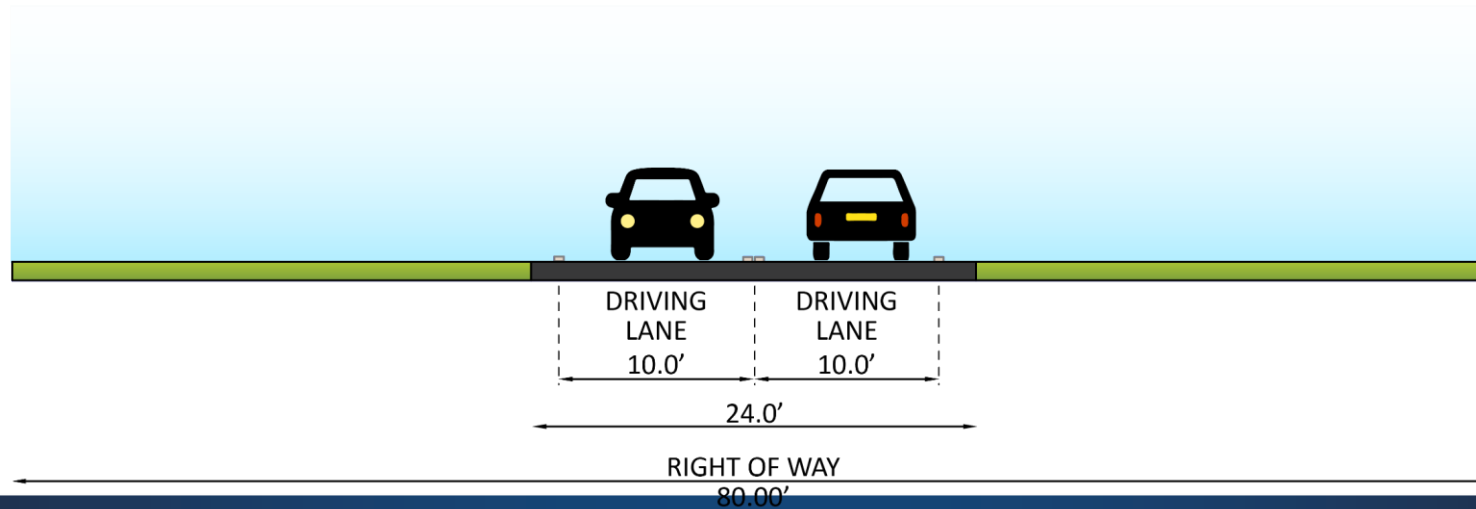


VISUALLY NARROW DRIVING LANES

Existing



Narrowed Lanes



- Warning Signs
- Madrid Roadways



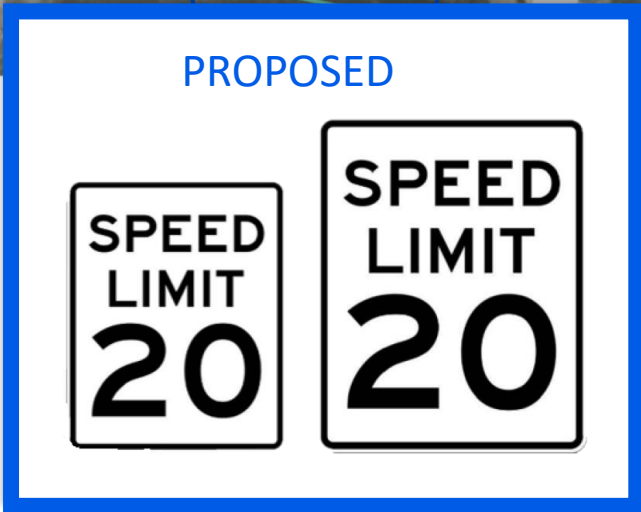
-  Oversized Signs
-  Unmodified Signs
-  Madrid Roadways



- Speed Limit Signs
- Madrid Roadways



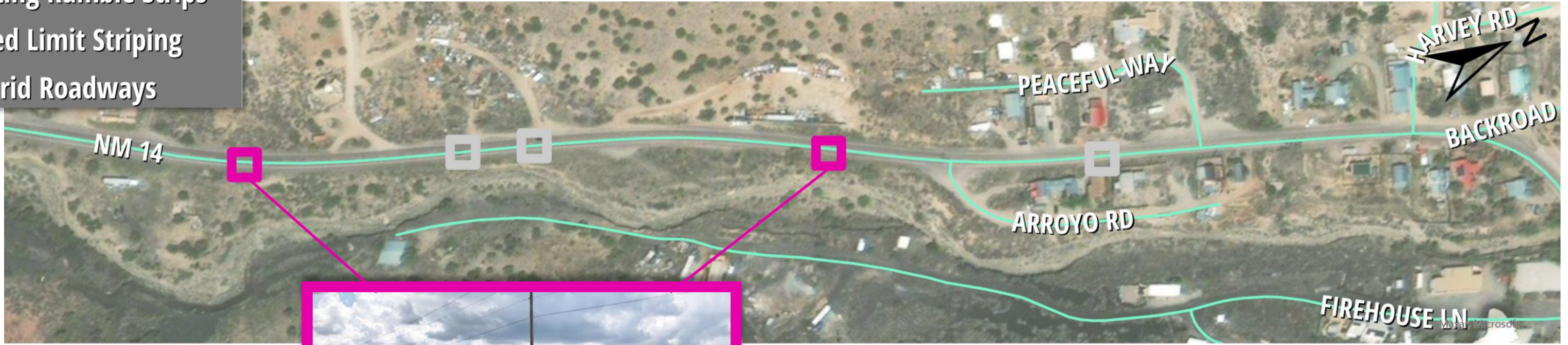
- Oversized Signs
- Unmodified Signs
- Madrid Roadways



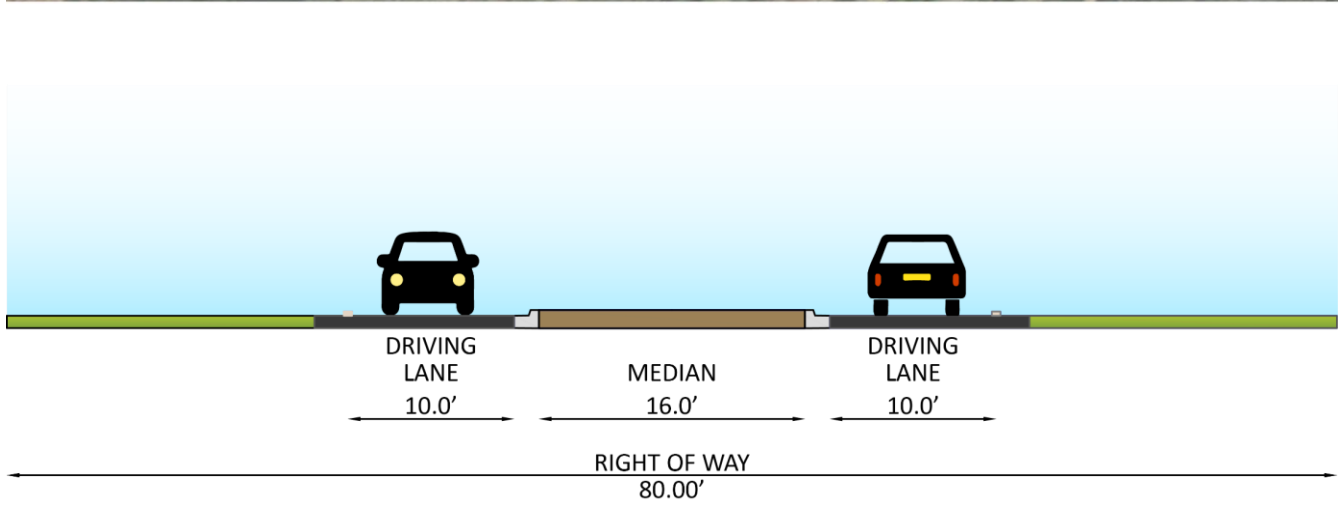
- Milled Rumble Strips
- Speed Limit Striping
- Madrid Roadways



- Relocated Rumble Strips
- Existing Rumble Strips
- Speed Limit Striping
- Madrid Roadways

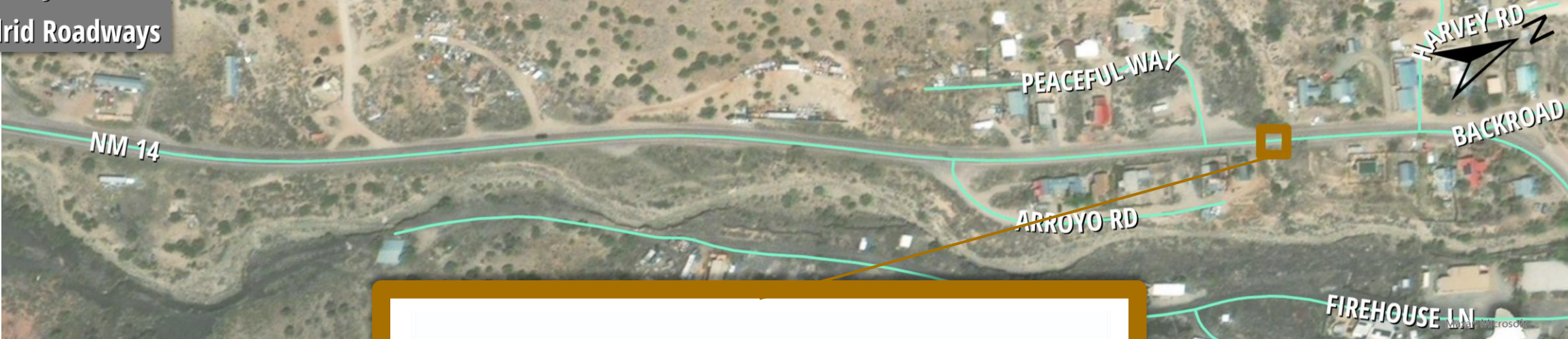


- Median Island
- Madrid Roadways



COMMUNITY INITIATIVES

- Gateway Feature
- Madrid Roadways



Section 2

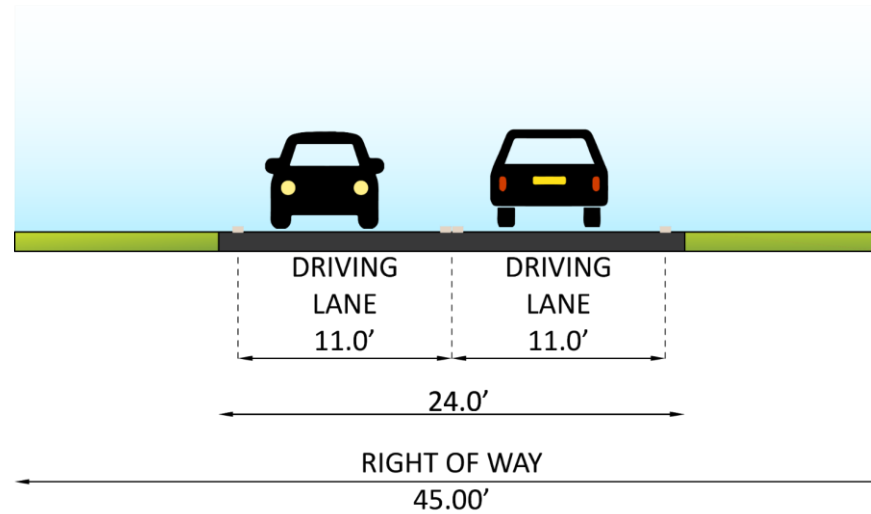
Observed Challenges

- Speed Compliance
- Pedestrian Safety
- Parking

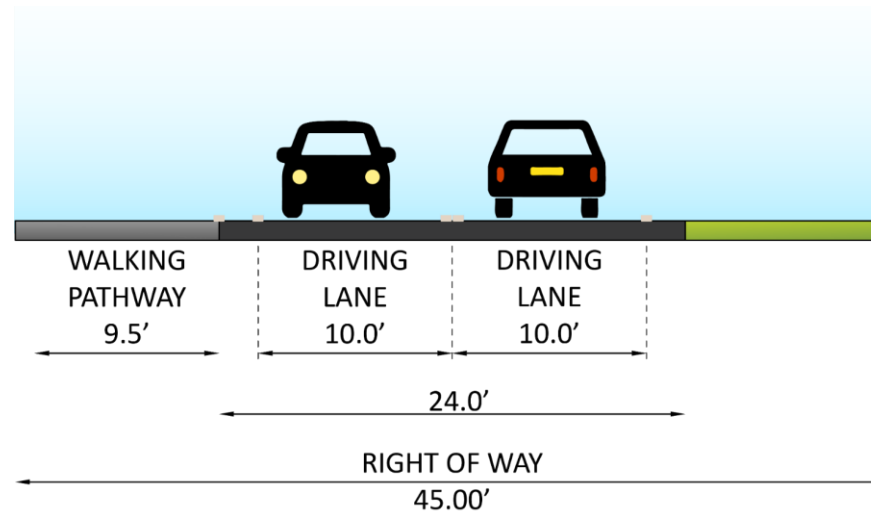


VISUALLY NARROW DRIVING LANES

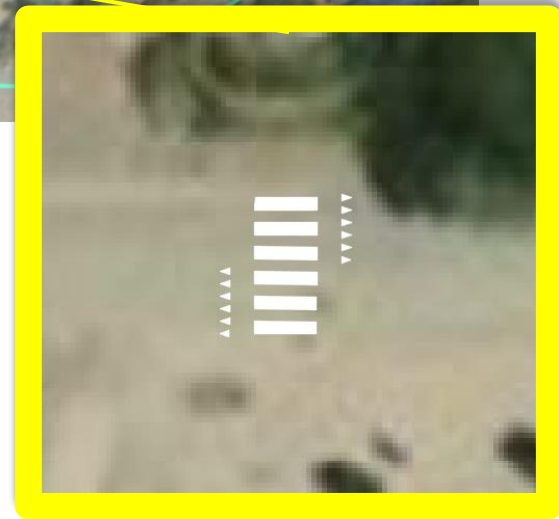
Existing



Narrowed Lanes



□ Crosswalk Location
— Madrid Roadways



□ Crosswalk Location
— Madrid Roadways



TIER 2

- Crosswalk Location
- Madrid Roadways



TIER 2

- Crosswalk Location
- Madrid Roadways



TIER 2

- Walking Pathway
- Madrid Roadways



COMMUNITY INITIATIVES

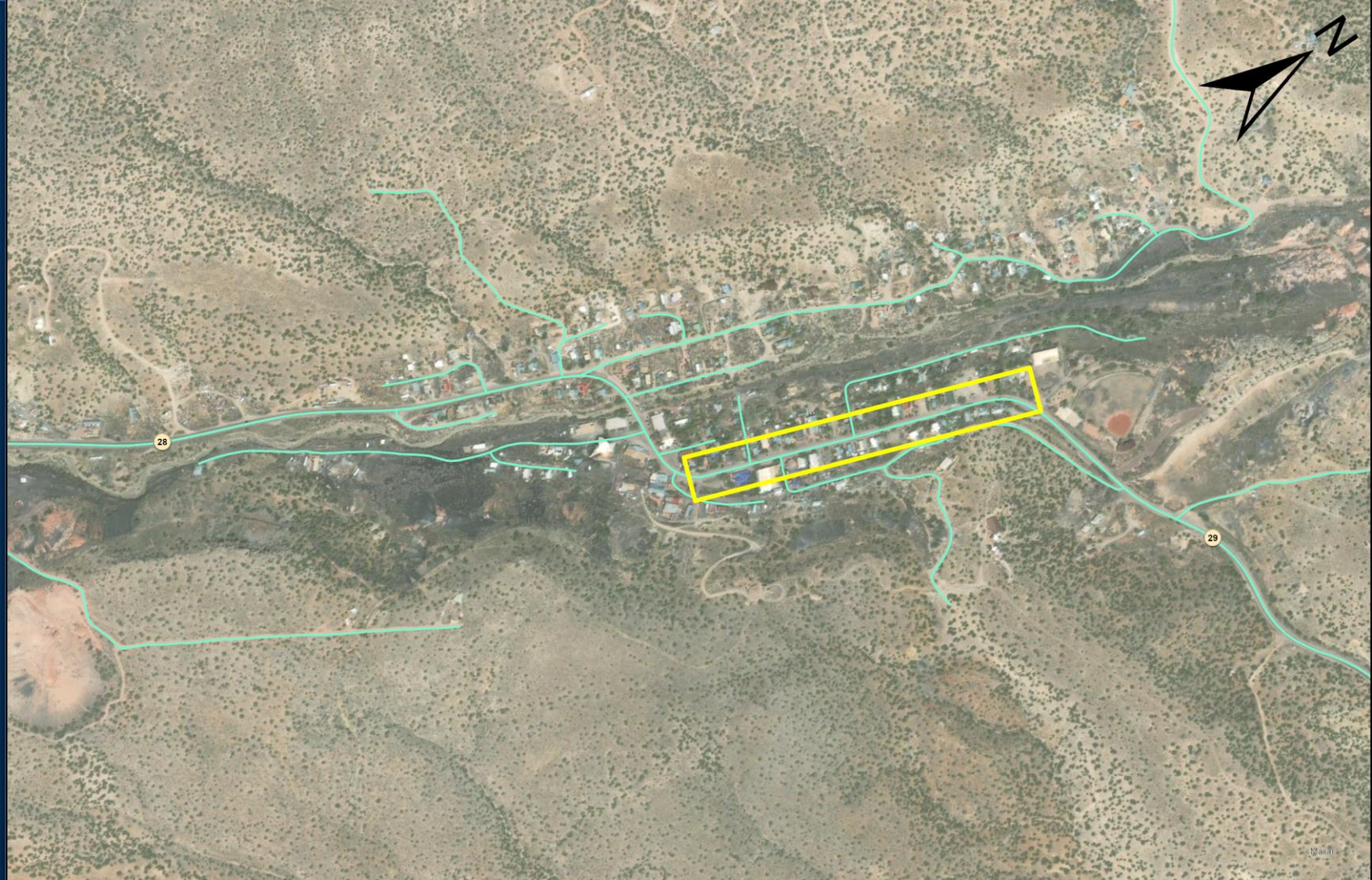
- Public Facilities Easement
- Madrid Roadways



Section 3

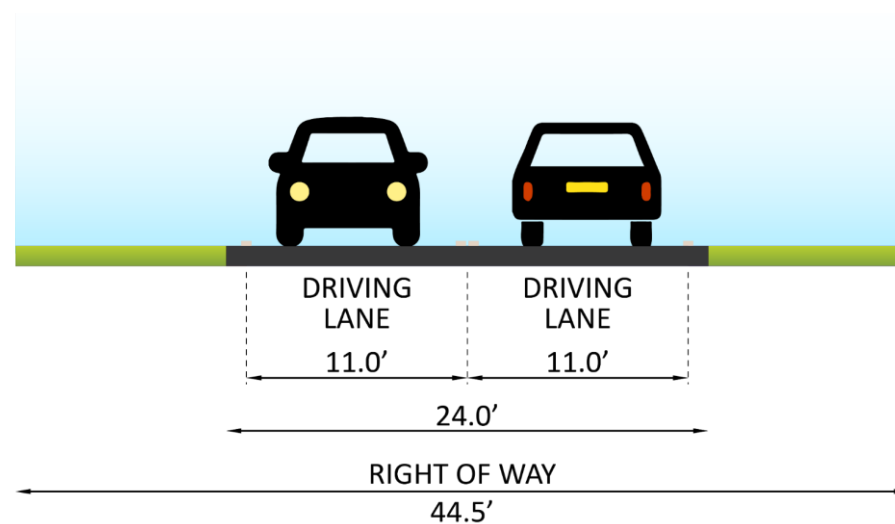
Observed Challenges

- Speed Compliance
- Pedestrian Safety
- Parking

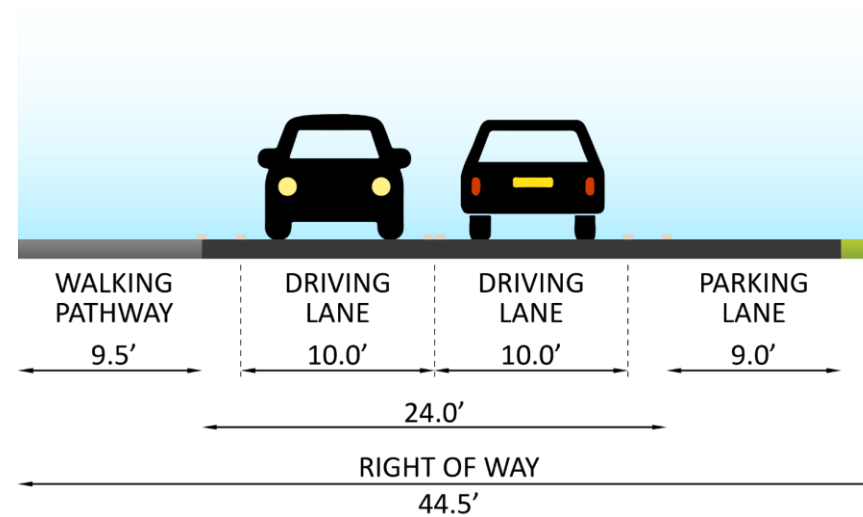


VISUALLY NARROW DRIVING LANES

Existing



Narrowed Lanes



- Crosswalk Locations
- Madrid Roadways



□ Crosswalk Locations

— Madrid Roadways



TIER 2

□ Crosswalk Locations

— Madrid Roadways



TIER 2

□ Crosswalk Locations

— Madrid Roadways



- Walking Pathway
- Boardwalk
- Madrid Roadways



TIER 3

- Walking Pathway
- Boardwalk
- Madrid Roadways



Section 4

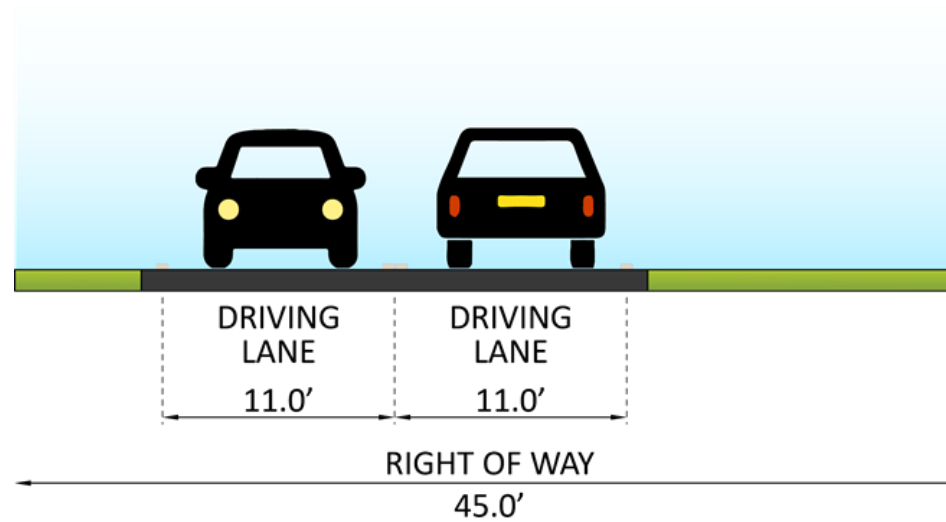
Observed Challenges

- Speed Compliance
- Parking

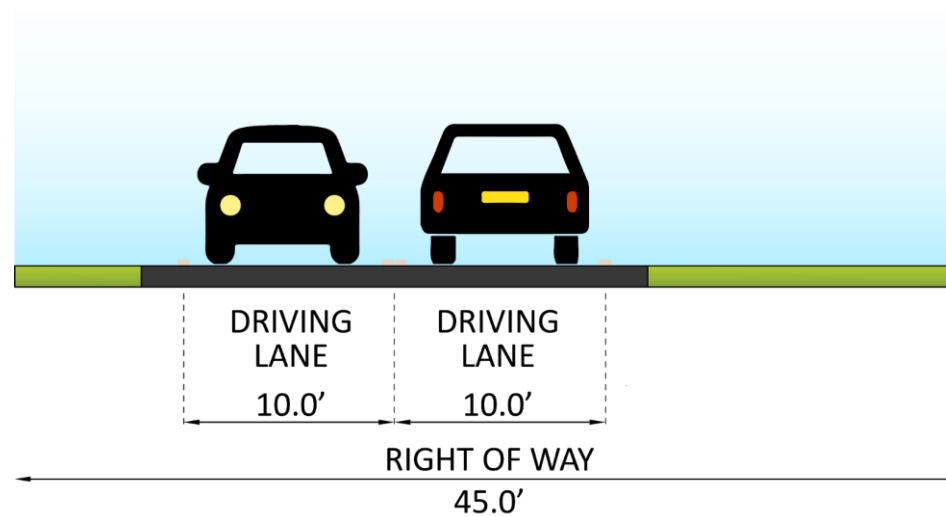


VISUALLY NARROW DRIVING LANES

Existing



Narrowed Lanes



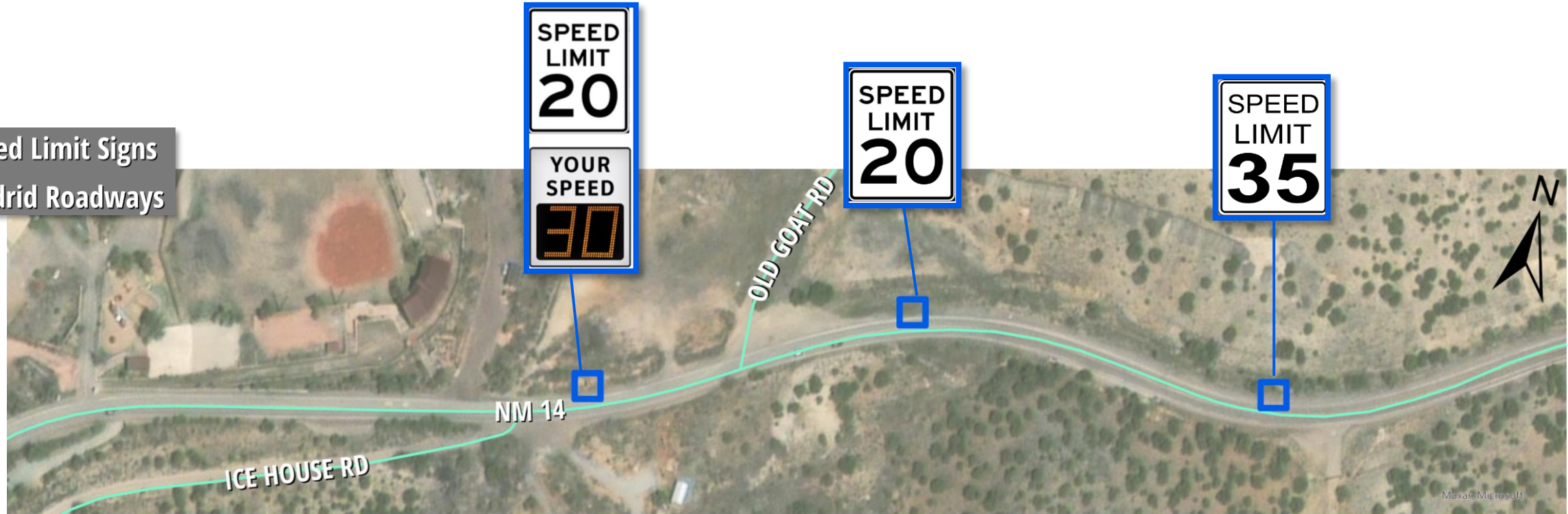
Warning Signs
Madrid Roadways



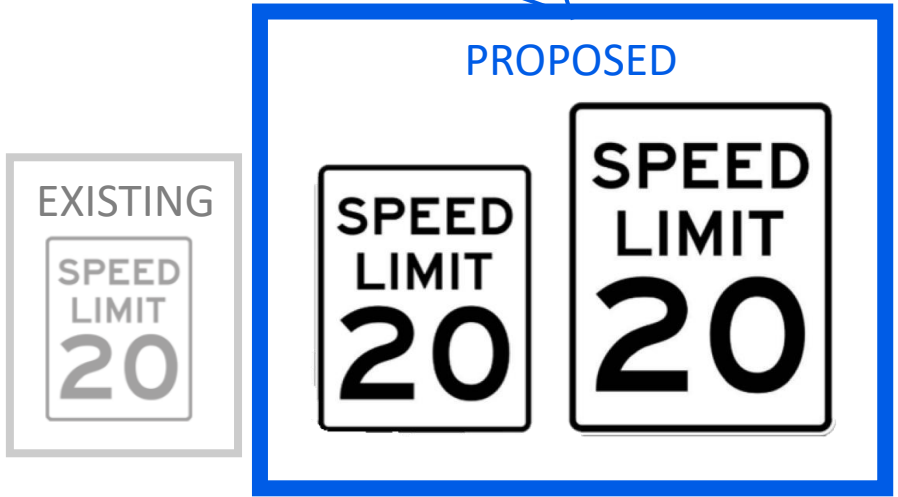
- Oversized Signs
- Unmodified Signs
- Madrid Roadways



- Speed Limit Signs
- Madrid Roadways



- Oversized Signs
- Unmodified Signs
- Madrid Roadways



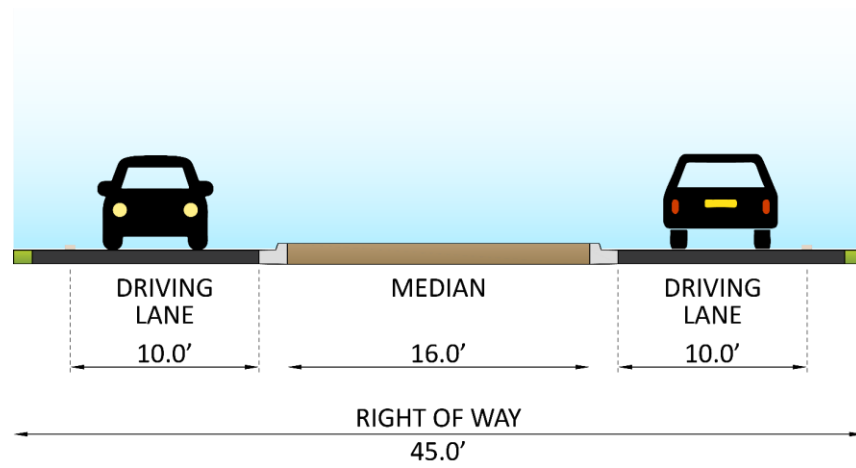
- Speed Limit Striping
- Madrid Roadways



- Relocated Speed Limit Striping
- Rumble Strips
- Speed Limit Striping
- Madrid Roadways

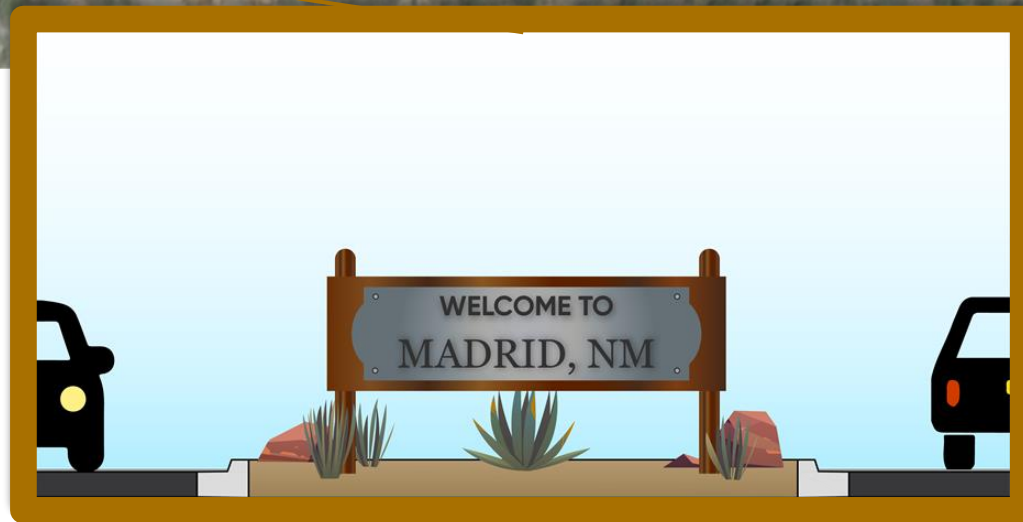


- Median Island
- Madrid Roadways



COMMUNITY INITIATIVES

- Gateway Feature
- Madrid Roadways



COMMUNITY INITIATIVES

- Boardwalk
- Proposed Art and History Walk
- Madrid Roadways



COMMUNITY INITIATIVES

- Propose and Promote Turquoise Trail route during peak-season
- Inter-community shuttle from parking area to Central Business District



COMMUNITY INITIATIVES

- Right of Way/NMDOT Airspace Agreements
- Feasibility of Safety Corridor Designation for NM-14
- Trailblazing
 - RV Parking
 - Alternative Parking Areas
 - Off-street Parking



THANK YOU

QUESTIONS?